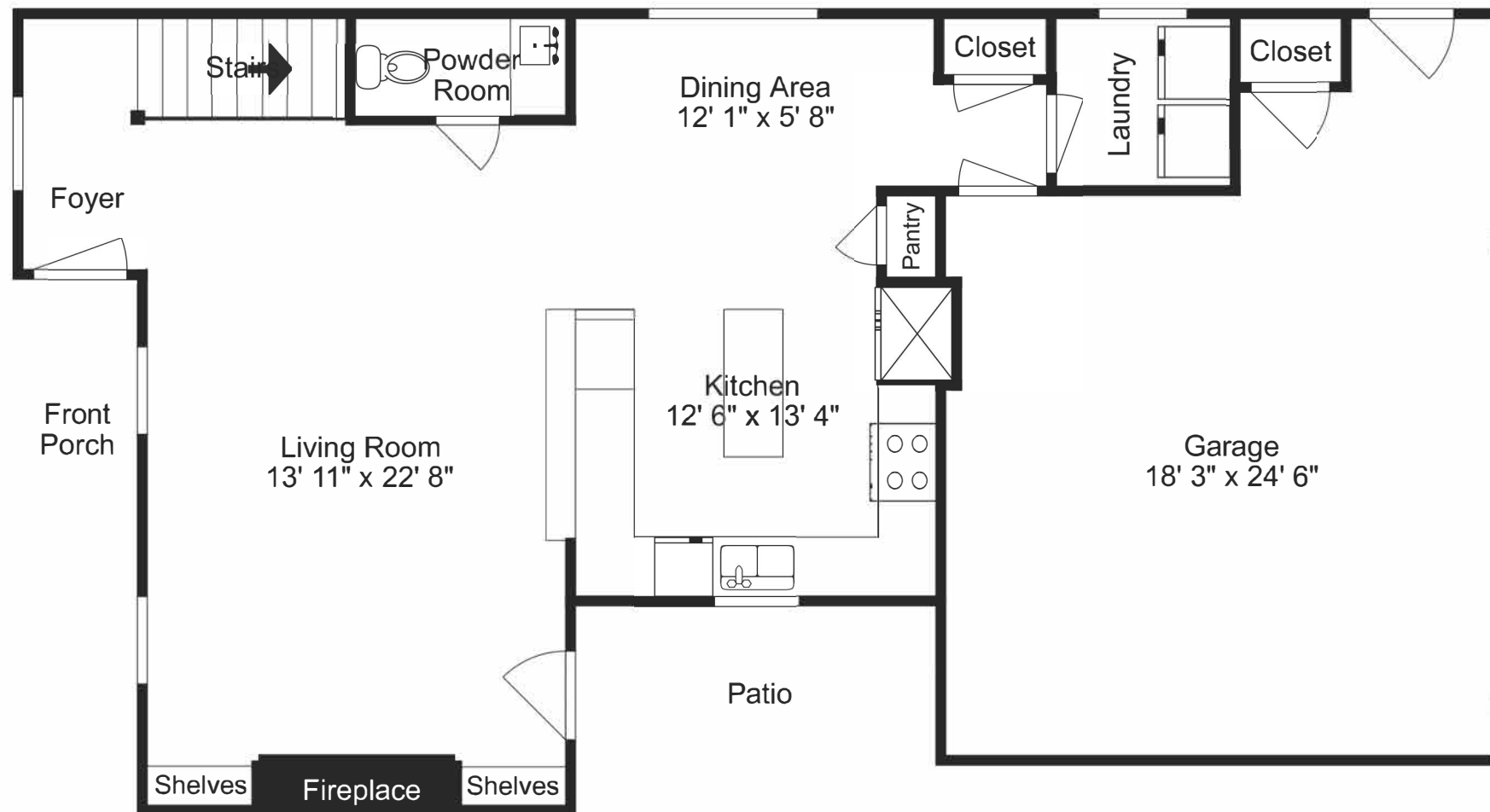


6519 West Pleasant Way, Rogers, United States

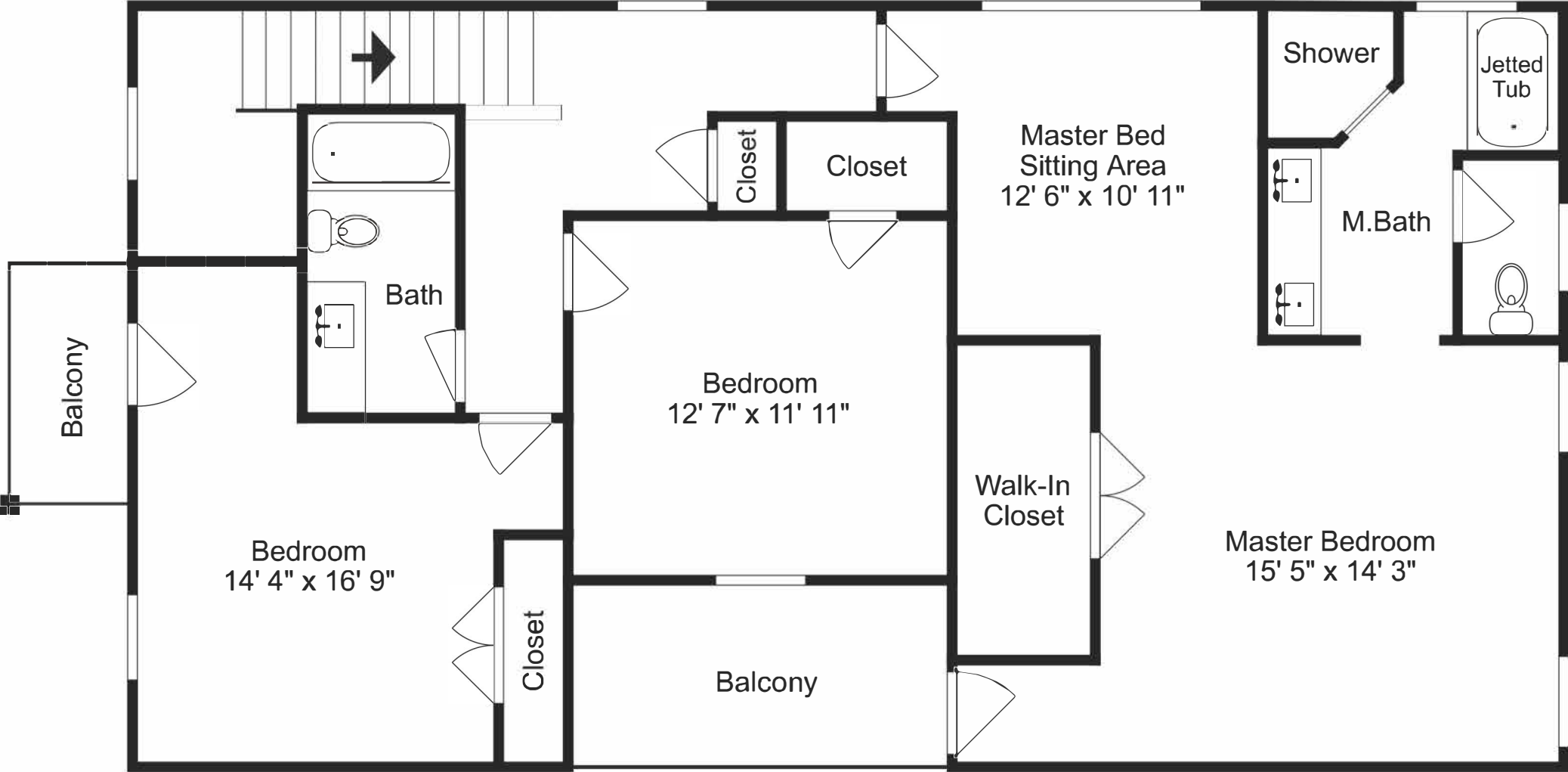
Main Floor



Total Livable Square Footage - 802 sq. ft.

Total Square Footage - 1177 sq. ft.

Disclaimer: The floorplans depicted and the stated dimensions in this illustration are indicative only and serve as an approximation of existing structures and features. This illustration is not guaranteed to be accurate or complete. The accuracy of all information should be verified through personal inspection and/or with appropriate professionals.



Total Square Footage - 1138 sq. ft.

Disclaimer: The floorplans depicted and the stated dimensions in this illustration are indicative only and serve as an approximation of existing structures and features. This illustration is not guaranteed to be accurate or complete. The accuracy of all information should be verified through personal inspection and/or with appropriate professionals.